

# **CAMBRIDGESHIRE CHILDREN AND YOUNG PEOPLE'S STRATEGIC PARTNERSHIP**

## **CHILDREN AND YOUNG PEOPLE'S INTERIM PLAN**

**2005 – 2006**

*A plan of the  
Children and Young People's Strategic Partnership*

*Working together to improve the well being of children and young  
people in Cambridgeshire*

**MARCH 2005**

*Approved by CYPSP 17<sup>th</sup> March 2005*

## CONTENTS

### 1 Purpose of the Plan (p 3)

- 1.1 A plan for 2005 – 2006
- 1.2 Which Children and Young People does it cover?
- 1.3 What does the Plan aim to do?

### 2 What we want achieve: vision, outcomes and action (p 5)

- 2.2 Our vision for Children and Young People
- 2.3 Outcomes we want to achieve
- 2.3 The needs and requirements the plan seeks to meet
- 2.4 The Principles
- 2.5 Measuring Success
- 2.6 CYPSP Area Plans
- 2.7 New inspection arrangements
- 2.8 Actions and priorities for change
  - 2.9.1 Be Healthy (p 7)
  - 2.9.2 Stay Safe (p 8)
  - 2.9.3 Enjoy and Achieve (p 9)
  - 2.9.4 Make a positive contribution (p 10)
  - 2.9.5 Achieve economic well being (p 11)

### 3 Who is responsible? (p 13)

- 3.1 Lead agencies
- 3.2 Children and Young People's Strategic Partnership
- 3.3 Governance Arrangements
- 3.4 Role of the Children's Services Authority

### 4 Towards a statutory 2006 Children and Young People's Plan: Tasks 05 – 06 (p14)

- 4.1 Challenges 2005 – 2006
- 4.2 Tasks to deliver the Children and Young People's Plan for 2006

### Appendices

- Appendix One: Related Plans
- Appendix Two: CYPSP Membership
- Appendix Three: Change for Children Outcomes Framework
- Appendix Four: Charter of Shared Values
- Appendix Five: CYPSP Structure (February 2005)

**For more information about the plan contact Sarah Ferguson from the Children and Young People's Development Team on 01223 717563**

**You can find out more about what has been happening in Cambridgeshire to deliver Every Child Matters and our local change programme by going to the website address [www.cambridgeshire.gov.uk/cfc](http://www.cambridgeshire.gov.uk/cfc)**

**For general enquiries you can also email the development team on [everychildmatters@cambridgeshire.gov.uk](mailto:everychildmatters@cambridgeshire.gov.uk)**

**More information on national guidelines and policy documents can be obtained from [www.everychildmatters.gov.uk](http://www.everychildmatters.gov.uk)**

## SECTION ONE: PURPOSE OF THE PLAN

### 1.1 A plan for 2005 - 2006

This plan outlines the high level strategic vision of Cambridgeshire's Children and Young People's Strategic Partnership (CYPSP), and priority actions which will support the delivery of better outcomes for children and young people living in Cambridgeshire.

Its purpose is to set out the overarching outcomes that all agencies (individually and as part of the Partnership) are seeking to achieve in response to Every Child Matters, the Children Act 2004, the National Service Framework for Children, Young People and Maternity services (NSF). It indicates what statutory and voluntary organisations are already doing, and will be doing, in order to improve the life chances of all children and young people in the county.

This is an interim plan which will provide the platform for the development of the more detailed statutory plan all local authority areas are required to have in place by April 2006<sup>1</sup>.

How the plan will be implemented is contained in the service plans of each agency associated with CYPSP. These may be obtained from each organisation or those listed in Appendix One may be provided in full on request.

### 1.2 Which children and young people does it cover?

It refers to **all** children and young people in Cambridgeshire up to the point at which they reach adulthood. This covers a wide age range. It starts from before birth and extends until the age of 19 years, and 25 for those with additional needs. This equates to 157,000 children and young people, of whom less than 10% are likely to be vulnerable<sup>2</sup> at any stage of their lives.

It pays attention to those children and young people who are particularly vulnerable, including children and young people who are looked after, and those with learning difficulties and disabilities.

As the most significant interactions for any child (especially in the early years) are with their family, it also covers their families.

---

<sup>1</sup> The DfES is issuing guidance on the content and requirements of the statutory Children and Young People's Plan in Spring 2005

<sup>2</sup> In this context "vulnerable" means children and young people whose life chances will be jeopardised unless action is taken to meet their needs better, and reduce the risk of social exclusion. Most children and young people will not be "vulnerable" throughout their whole childhood, but will go through periods of vulnerability.

### **1.3 Who are the partners to it?**

The partners to the Plan are those organisations represented on the Children and Young People's Strategic Partnership (see Appendix Two) and all other organisations that work with children, young people and families in Cambridgeshire.

#### **This therefore covers:**

- District Councils (Cambridge City, East Cambridgeshire, Fenland, Huntingdonshire, South Cambridgeshire)
- Connexions
- Learning and Skills Council
- Job Centre Plus
- Police
- Primary Care Trusts (Cambridge City and South Cambridgeshire, East Cambridgeshire & Fenland, Huntingdonshire, Greater Peterborough Primary Care Partnership))
- Cambridgeshire and Peterborough Mental Health NHS Trust and acute NHS Trusts (Addenbrooke's, Hinchingsbrooke, Peterborough, Queen Elizabeth Hospital - Kings Lynn)
- schools and further education colleges
- Cambridgeshire County Council
- a wide range of voluntary and private organisations, including those that provide housing support for young people

### **1.4 What does the plan aim to do?**

The plan aims to help organisations demonstrate their contribution to the overall vision for children and young people in Cambridgeshire and make connections more effectively with the work of other agencies.

The plan should support the co-ordination of resources where this will produce more effective child and young person centred services. The workforce development which underpins the plan should lead to increased co-operation in sharing information and skills.

The plan should support working together to help deliver the agreed outcomes and help all partners to understand the accountability arrangements for delivering the shared outcomes.

## SECTION TWO: VISION, OUTCOMES AND ACTIONS

### 2.1 Our Vision for Children and Young People

Our vision is to improve the well being of all children and young people in Cambridgeshire from pre-birth to 19.

We will aim to ensure that, regardless of their personal circumstances, all children and young people have the best possible start in life and an equal opportunity to thrive within their families and communities. We aim to ensure that they are supported, particularly at times of transition, so that they are able to make the most of education, training and employment opportunities

We will work to ensure that parents and carers are given timely and appropriate support in order to realise this vision.

### 2.2 The outcomes we want to achieve

Our aspiration for all children and young people is for them to:

**BE HEALTHY:** enjoy good physical and mental health and lead a healthy lifestyle

**STAY SAFE:** be protected from harm and neglect and grow up able to look after themselves

**ENJOY AND ACHIEVE** – get the most out of life and develop broad skills for adulthood

**MAKE A POSITIVE CONTRIBUTION** – to the community and to society and not engage in anti-social or offending behaviour

**ACHIEVE ECONOMIC WELL BEING** – so that they have a good start in life and are able to achieve their full potential and secure employment.

Our actions will be underpinned by our collective aim to deliver the Core Standards laid out in the National Service Framework for Children, Young People and Maternity Services.<sup>3</sup>

### 2.3 What needs and requirements is the plan seeking to meet?

The plan aims to meet the needs of children, young people and their families, focussing in particular on improving transitions. It takes prevention as its starting point, building on the principles and ambitions set out in 'Building Bridges' (CYPSP's Preventative Strategy) Sure Start Local Programmes, Children's Fund and others.

Beyond these programmes, it aims to make clear the role of 'universal' services which are accessible to all, and which can make the key difference in preventative approaches. These include:

- District Councils through leisure and recreation, community development and decent housing

<sup>3</sup> These can be viewed at

- PCTs and NHS Trusts through health promotion, primary and secondary health care
- Schools, colleges, the Learning and Skills Council, and Connexions through education and training
- Statutory, non- statutory and voluntary/ private preschools, childcare and youth services
- All agencies in relation to economic development, the quality of the environment and the opportunities for good health, social well-being and the absence of crime.

These services have a significant impact on whether children and young people's experience is largely positive or whether it is characterised by disadvantage, and inequality of access and opportunity.

## 2.4 The principles

To be more effective collectively in delivering these outcomes, the development of our organisational arrangements and activities will be guided by the following principles:

Children and young people's services must work for the well being of all children and young people

**Children and young people should be able to access all mainstream services. These services should be flexible and responsive to a diverse range of needs. They should work to promote the inclusion of children and young people in the local community and enable them to live as normal a life as possible**

Services must be built around the needs of people and communities

**Services must work to address inequalities in the health and well being of all children and young people**

Educational attainment and improving the well being of children and young people go hand in hand

**Services must be designed to identify, respond to and resolve issues and concerns at an early stage**

Children, young people and their families must be involved in the design and evaluation of services

**The role of parents, carers and families in the development of their children must be recognised and supported**

All services must contribute to the safety of children, young people and families  
There must be a shared framework of outcomes, policies, standards and entitlements to guide integrated planning and delivery of local services

**Services must be delivered in an integrated way based on shared information and an integrated referral and assessment process**

There must be a fast response to needs and access to more specialist services when appropriate

## **2.5 Measuring success**

The key performance indicators identified to measure the success against the five outcomes have been selected from the Change For Children Outcomes Framework (Appendix three) as the ones where the partnership could have maximum effect. These provide the core twelve measures of impact which the CYPSP Board will monitor. They will be subject to review during 2005 – 2006 as work develops on the broader Children and Young People's Plan and performance framework.

The remaining set of indicators from the framework will also be 'owned' by key partnership groups, and will provide the crucial wider context for understanding and measuring effectiveness of our actions. The work on which group and agency will lead on these will be finalised during 2005.

Performance management arrangements will need to build on what children, young people and families tell us is working.

Achieving the outcomes will take time, and achievable targets need to be set against a realistic timescale. Baseline data and targets will need to be set against each of the indicators by each of the responsible partnerships.

## **2.6 CYPSP Area Plans**

It is the intention that CYPSP Area Groups will develop area based plans which complement the County Children and Young People's Plan. These plans should build on priorities included in this plan but reflect more locally relevant activities and indicators. These might include for example, Local Public Service Agreement targets, Best Value Performance Indicators and those related to the NHS. As they are established, CYPSP Area Groups will be tasked to develop these plans during 2005.

## **2.7 New inspection arrangements**

The government is introducing new inspection arrangements which will underpin the partnership approach essential to the delivery of Every Child Matters and the NSF for Children. From 2005, all Children's Services Authorities (the County Council) will be subject to an Annual Performance Assessment. The outcomes from this will inform Joint Area Reviews from 2006, which will impact directly on all members of the Partnership. Final guidance is yet to be published on the exact scope of these inspections, but they have been built into the 05 – 06 plan from the information available. More information is available on the DfES website: [www.everychildmatters.gov.uk](http://www.everychildmatters.gov.uk)

## **2.8 Actions and priorities for change**

The priority actions to help us deliver improved outcomes for children and young people are outlined on the following five pages.

## 2.9.1 BE HEALTHY

**Our aim is to ensure that children and young people are:**

- Physically healthy
- Mentally and emotionally healthy
- Sexually healthy
- Living healthy lifestyles
- Choosing not to take illegal drugs

We also want parents, carers and families to promote healthy choices.

**In order to achieve these outcomes we will work towards:**

- Enhancing ante-natal and post-natal visiting until twelve months, offered to vulnerable women identified through universal assessments, focussing on Sure Start and Children's Centre areas initially
- To support this activity, work towards implementing the Child Health Promotion Programme
- Promoting healthy eating, physical and sports development initiatives
- Promoting the use of parks and open spaces
- Promoting healthy lifestyles through personal, social and health education programmes, including good sexual health
- Improving the health of looked after children
- Developing the availability and responsiveness of child and adolescent mental health services
- Implementing the objectives of the Drug and Alcohol Action Team.
- Implementing the NSF for Children, Young People and Maternity Services
- Implementing the objectives of Cambridgeshire's Teenage Pregnancy Strategy

<b>We will be measuring success through the following key indicators</b>	<b>The lead agency for this measure is:</b>	<b>The partnership group which will monitor progress is provisionally:</b>
Under 18 conception rate	Connexions	CYPSP Over 13s
% obese under 11s	PCTs	CYPSP Area Groups

**In order to meet the inspection criteria of the Joint Area Reviews from 2005, our activities will contribute to ensuring that:**

1. Parents are helped to ensure that their children are healthy
2. Healthy lifestyles are promoted to children and young people
3. Action is taken to minimise environmental health risks for children and young people
4. Children and young people's health needs are identified and assessed at an early stage
5. Children and young people's physical health is supported
6. Children and young people's mental health is supported
7. Children and young people who are looked after are helped to be healthy
8. Children and young people with Learning Difficulties and Disabilities are helped to be healthy



## 2.9.2 STAY SAFE

### Our aim is to ensure that children and young people are safe from:

- Maltreatment, neglect, violence and sexual exploitation
- Accidental injury and death
- Bullying and discrimination
- Crime and anti-social behaviour in and out of school
- Have security, stability and are cared for

We also want parents, carers and families to provide safe homes and stability.

### In order to achieve these outcomes we will work towards:

- Establishing by April 2006 the Local Safeguarding Children Board and work towards implementing its Business Plan
- Ensuring that all services working directly with children, young people and their families have robust child protection procedures and appropriate staff training in place
- Developing preventative approaches which increase the identification and support of vulnerable children and families, particularly during the early years
- All schools being judged as satisfactory or better during Ofsted inspections in their child protection arrangements
- Promoting safeguarding in the school curriculum through the 'Staying Safe' programme in primary schools and early years settings and the health promoting schools programme.
- Promoting road safety education in schools and continued investment in traffic calming schemes in build up areas
- Developing lead professional arrangements and the role of home-school liaison workers and social workers located in schools
- Enabling all children, and especially those that have special needs to live in a house that is safe and meets their needs
- Ensuring children and young people who become homeless are housed as soon as possible in suitable accommodation and in a way that supports as far as possible continuity in their education
- Implementing the recommendations of recent Serious Case Reviews with particular regard to children with disabilities and thresholds of neglect
- Reducing the numbers of children and young people at risk where there is a record of domestic violence

<b>We will be measuring performance through</b>	<b>The lead agency for this measure is:</b>	<b>The partnership group which will monitor progress is provisionally:</b>
Number of 0 – 15 year olds injured or killed in road traffic accidents	Office of Children and Young People – Inclusion Directorate	Local Safeguarding Board
Re- registrations on the child protection register	Office of Children and Young People – Inclusion Directorate	Local Safeguarding Board

### In order to meet the inspection criteria of the Joint Area Reviews from 2005, our activities will contribute to ensuring that:

- 1 Children and young people and their carers are informed about key risks and how to deal with them
- 2 Steps are taken to provide children and young people with a safe environment
- 3 Steps are taken to minimise the incidence of child abuse and neglect
- 4 Child protection arrangements meet the requirements of 'Working Together to Safeguard Children'
- 5 Children and young people who are looked after are helped to stay safe
- 6 Children and young people with learning difficulties and Disabilities are helped to stay safe

## 2.9.3 ENJOY AND ACHIEVE

### Our aim is to ensure that:

- young children are ready for school
  - school-age children attend and enjoy school
  - children achieve stretching national educational standards at primary school
  - children and young people achieve personal and social development and enjoy recreation
  - children and young people achieve stretching national educational standards at secondary school.
- We also want parents, carers and families to support learning.

### In order to achieve these outcomes we will work towards:

- Reviewing current play provision in order to implement our play strategy
- Improving access to specialist support to better meet the needs of some children and young people
- Integrating early years education alongside an increase in childcare provision
- Addressing the uneven distribution of maintained nursery provision
- Increasing the number of families with access to family learning opportunities, supporting the early development of their children
- Delivering the Children's Disability Strategy with a view to increasing access of services and mainstream school to all
- Publishing our new Special Educational Needs (SEN) Strategy which sets out our proposals for implementing government policy set out in Barriers to Achievement
- Reducing the gap in attainment between the county average and schools serving high needs areas and vulnerable groups of children, particularly those from minority ethnic groups, travellers and children and young people in public care
- Improving attendance rates at school with a particular focus on schools with a relatively low attendance rate
- Developing and implementing a programme to improve our school provision for children and young people who are particularly gifted.
- Increasing opportunities for informal learning and recreation through improved youth provision
- Increasing opportunities for community based sports and recreation
- Developing children's centres and extended schools, including after school activities
- Ensuring young people can fulfil their potential in the work place through the provision of good training and support post 16 by ensuring that public sector targets for participation, apprenticeships and higher education are reached

We will be measuring performance through	The lead agency for this measure is:	The partnership group which will monitor progress is provisionally:
Level of development reached at the end of foundation stage	Office of Children and Young People – Learning Directorate	CYPSP – under 13s
Take up of sporting opportunities by 5 – 16 year olds	District Councils	CYPSP – Area Groups
% 16 year olds achieving the equivalent of 5 A* - C GCSE, including floor target	Office of Children and Young People – Learning Directorate	CYPSP – over 13s

### In order to meet the inspection criteria of the Joint Area Reviews from 2005, our activities will contribute to ensuring that:

- 1 Parents and carers are supported in helping children and young people to enjoy and achieve
- 2 Early years provision prepares children for school and helps them meet early learning goals
- 3 Children and young people are enabled and encouraged to attend and enjoy school
- 4 Children and young people are supported in developing personally and academically
- 5 Action is taken to ensure that educational provision is of good quality
- 6 Educational provision is made for children unable to attend school
- 7 There is a range of accessible recreational provision for children and young people
- 8 Children and young people who are looked after are helped to enjoy and achieve
- 9 Children and young people with learning difficulties and disabilities are helped to enjoy and achieve

## 2.9.4 MAKE A POSITIVE CONTRIBUTION

### Our aim is to ensure that children and young people:

- engage in decision-making and support the community and environment
- engage in law-abiding and positive behaviour in and out of school
- develop positive relationships and choose not to bully or discriminate
- develop self-confidence and successfully deal with significant life changes and challenges
- develop enterprising behaviour.

We also want parents, carers and families to promote positive behaviour.

### In order to achieve these outcomes we will work towards:

- Sustaining and developing the CYPSP Children and Young People's Participation Strategy, ensuring all partners develop action plans to meet standards set by the Charter of Shared Values (Appendix Four)
- Tackling anti-social behaviour as part of district based Community Safety Strategies
- Encouraging participation and achievement in learning by increasing choice, opportunities and progression routes for learners and potential learners, including supporting enterprise in business.
- Helping people to improve their quality of life and fulfil their potential through developing skills for life (literacy, numeracy and ICT), skills for work, qualifications and interests
- Supporting the implementation of the Health Promoting Schools programme in all Cambridgeshire schools and early years settings
- Supporting the growth and development of the voluntary and community sector in order to develop local communities and neighbourhoods and support the delivery of Change 4 Children in Cambridgeshire
- Developing special schools, enabling them to contribute to effective inclusion in mainstream schools.

<b>We will be measuring performance through</b>	<b>The lead agency for this measure is:</b>	<b>The partnership group which will monitor progress is provisionally:</b>
Reducing the number of exclusions from primary and secondary schools	Office of Children and Young People – Learning Directorate	CYPSP – under and over 13's
Reduce level of offending	Office of Children and Young People – Youth Offending Service	Community Safety Partnerships (x5)

### In order to meet the inspection criteria of the Joint Area Reviews from 2005, our activities will contribute to ensuring that:

- 1 Children and young people are helped to develop socially and emotionally
- 2 Children and young people are helped to manage changes and respond to challenges in their lives
- 3 Children and young people are encouraged to participate in decision making and to support the community
- 4 Action is taken to reduce anti-social behaviour
- 5 Children and young people who are looked after are helped to make a positive contribution
- 6 Children and young people with learning difficulties and disabilities are helped to make a positive contribution

## 2.9.5 ACHIEVE ECONOMIC WELL BEING

### Our aim is to ensure that children and young people

- engage in further education, employment or training on leaving school
- are ready for employment
- live in decent homes and sustainable communities
- have access to transport and material goods
- live in households free from low income.

We also want parents, carers and families to be supported to be economically active.

### In order to achieve these outcomes we will work towards:

- As part of the 14 – 19 strategy, developing a rich curriculum for 14-19 year olds, helping young people make a successful transition to adulthood and the world of work
- Supporting all secondary schools in their work to help meet the aspirations and needs of young people in Cambridgeshire. We will work with them to extend choice for pupils by providing a flexible and varied curriculum
- Ensuring that schools and colleges provide opportunities for young people to follow courses that lead to qualifications appropriate to their potential, aptitudes and aspirations
- Increasing personal development opportunities for young people to gain informal accreditation of learning
- Ensuring that no school falls below the minimum standard of 30% of students achieving at least 5 GCSEs at grade A\*-C
- Reducing the numbers of young people becoming homeless by ensuring that young people at risk have access to family mediation
- Increasing the provision of support and stable, appropriate accommodation for 16 – 19 year olds who become homeless
- Increasing the take up of benefits for families on a low income
- Supporting the development of new communities to ensure children and young people living in them in the future have the best possible chances in life

We will be measuring performance through	The lead agency for this measure is:	The partnership group which will monitor progress is provisionally:
% 16 – 18 year olds leaving Pupil Referral Units not in education, employment or training	Connexions	CYPSP – over 13s
% social housing and vulnerable households in the private sector in a decent condition	District Councils	CYPSP - Area

### In order to meet the inspection criteria of the Joint Area Reviews from 2005, our activities will contribute to ensuring that:

- 1 Childcare is available to meet the needs of parents in work or seeking work
- 2 Young people are helped to prepare for working life
- 3 Action is taken to ensure that 14 – 19 education is planned in a coordinated way
- 4 Action is taken to ensure that good quality education is provided
- 5 Community regeneration initiatives include action to address the needs of children and young people and their families
- 6 Steps are taken to give families and young people access to decent home
- 7 Children and young people who are looked after are helped to achieve economic well being
- 8 Children and young people with learning difficulties and disabilities are helped to achieve economic well being

## **SECTION THREE : WHO IS RESPONSIBLE**

### **3.1 Lead agencies**

In order to ensure clear accountability, lead services/ organisations have been indicated in bold. They will be asked to lead the next stage of the process through robust partnerships, and capture the relevant activities which will help to achieve success. None of the outcomes are deliverable by a single organisation and partnership action plans will need to be developed where necessary, to support the delivery of the Children and Young People's Plan for 05 – 06. The involvement of the voluntary and community sector in both the planning and delivery of services will be crucial to delivering the ambitions of the partnership.

### **3.2 Children and Young People's Strategic Partnership**

The Children and Young People's Strategic Partnership is still in the process of being developed, including its structure (see Appendix Five for current working structure). This plan forms the core business of CYPSP, and sets the direction of travel for where improvements need to be made to improve outcomes for children and young people in Cambridgeshire.

Sub groups of the partnership have been identified to lead specific outcomes. This will be subject to review as work on the partnership business, developments in the Office of Children and Young People and any resulting changes to the partnership structure emerge during 2005 – 2006. In the meantime, the performance against the indicators in this plan will be monitored by CYPSP, with reports on progress taken by the appropriate partnership group. Progress will also need to be systematically reported to children, young people and their families in Cambridgeshire.

There will need to be clear accountabilities between the directorates of the new Office of Children and Young People's Service and its supporting partnership structure. In addition there is a clear expectation that the CYPSP Area Groups will develop area based plans (see 2.6 above, page 7). Similarly, there will need to be clear arrangements in place between Local Safeguarding Children Board (LSCB) and the CYPSP, and between the Director of Children's Services and the independent Chair of the LSCB.

### **3.3 Governance arrangements: Members, Non –Executive Directors and Board Members**

Existing performance management and governance arrangements remain unaffected. As work develops during 2005 a clear relationship between governing bodies of partner organisations and CYPSP will need to be agreed. This will need to make explicit the accountabilities and responsibilities of any individual partner organisation.

### **3.4 Children's Services Authority: Cambridgeshire County Council**

The Children's Service's Authority (CSA) remains the accountable body for leading and developing the Every Child Matters Change 4 Children agenda on behalf of the wider partnership. It will also be the accountable body for the Children and Young People's Plan from 2006. However, it is the intention of the government and the ambition in Cambridgeshire, that the wider partnership provides the focus for the shared agenda. As such, developing the agenda and priorities will continue to reflect the partnership approach, whilst securing appropriate governance arrangements as indicated in 3.3.

## **SECTION FOUR: TOWARDS CHILDREN AND YOUNG PEOPLE'S PLAN FOR 2006 – KEY TASKS FOR 2005 - 2006**

### **4.1 Challenges 2005 - 2006**

Service providers in Cambridgeshire are experiencing a time of unprecedented change in the delivery of Children and Young People's Services. During 2005, the following are some of the key challenges which will need to be addressed:

- Ensuring that all partners feel a sense of ownership of the agenda
- Maintaining the focus on prevention, whilst meeting the needs of high-risk families and young people. CYPSP has agreed that the 2006 plan will be underpinned by a revised Local Preventative Strategy (Building Bridges) which will help achieve this.
- Agreeing Area and Locality arrangements in terms of partnership, planning and organisational arrangements
- Making sure improvements are made in some service areas
- Sustaining existing areas of good performance in others
- Begin to implement the National Service Framework alongside Every Child Matters
- Developing the culture and practice of all partners delivering services to children and young people
- Put in place the organisational development and service/business planning arrangements for the Office of Children and Young People's Services (eg the Connexions Pathfinder requires that joint commissioning arrangements and pooled budgets are in place for some of 13 – 19 services by April 06)
- Ensuring safeguarding is woven into all changes and developments
- Supporting staff, particularly in social care, through times of change and uncertainty.
- Meeting the challenge of growth and change in the Cambridge sub region

### **4.2 Tasks to deliver the Children and Young People's Plan for 2006**

In line with Section 10 of the Children Act 2004, DfES are currently finalising guidance on the Children's and Young People's Plan required from all authorities by 1<sup>st</sup> April 2006. This plan will be required to cover the following:

- a local vision for children and young people
- a strategic analysis of needs in relation to the five key outcome areas in Every Child Matters, including the views of children, young people, parents and carers.
- priorities and the actions planned to achieve these outcomes
- a statement of resources and cost pressures
- an explanation of the arrangements for performance management and review
- an explanation of how the Plan links to the strategic plans of local partners subject to the Children Act duty to co-operate.

Such Plans are not required of excellent authorities. However, Cambridgeshire is intending to produce one built on this interim plan, given the benefits of the joint planning process. This will be taken forward through the development of a joint commissioning strategy. It will encompass an up-to-date needs analysis, clarification of the priority objectives, identification of the resources available, and determination of how they will be deployed and reviewed in the period of the plan from 2006.

It is proposed that the co-ordination of these activities is overseen by the Integrated Commissioning Group of the CYPSP. This group will need to refer to CYPSP Board, key partnership sub groups and relevant governing bodies of partner organisations for its development and final agreement by April 2006.

## **APPENDIX ONE: RELATED PLANS**

### ***Government legislation, guidance and Cambridgeshire County Council Service plans for 2005-06 associated with the Interim Children and Young People's Strategic Plan***

#### **National Legislation and Guidance governing this work**

Every Child Matters and the Children Act 2004 – November 2004  
The Five-Year Strategy for Children and Learners – July 2004  
14 – 19 Education and Skills White Paper  
The National Service Framework for Children, Young People and Maternity Services – November 2004  
Choosing Health: The public health white paper - November 2004  
National Standards, Local Action: The Health and Social Care Standards and Planning Framework 2005/06 to 2007/08  
Choice for parents, the best start for children: a ten-year strategy for childcare - December 2004  
Green Paper for Youth – spring 2005

#### **Plans of Cambridgeshire Children and Young People's Strategic Partnership**

Cambridgeshire's Local Preventative Strategy 'Building Bridges'  
Children and Young People's Participation Strategy  
Children's Fund Delivery Plan

#### **Cambridgeshire County Council Service plans available by request**

Behaviour Support Plan  
Early Years Development and Childcare Plan  
Single Education Plan

#### **Plans available directly from organisations**

Connexions Business Plan  
Care and Education Partnership Plan  
Community strategies of Local Strategic Partnerships  
Housing and other key strategies of District Councils  
Youth Justice Strategy- Deliverable Plan  
Lifelong learning plan  
Local delivery plans of PCTs  
Supporting People Strategy  
Youth Justice Plan,  
Youth services

## **APPENDIX TWO: MEMBERSHIP OF CYPSP (March 2005)**

### **Cambridgeshire County Council**

Chief Executive – Chair  
Director of Children and Young People's Services (from April 05)  
Director of Education, Libraries and Heritage  
Director of Social Services  
Director Corporate Director  
Programme Director – Change 4 Children in Cambridgeshire  
Head of Youth Offending Service

### **District Councils**

Huntingdonshire – Chief Executive  
South Cambridgeshire – Chief Executive  
Cambridge City – Chief Executive  
East Cambridgeshire – Chief Executive  
Fenland – Chief Executive

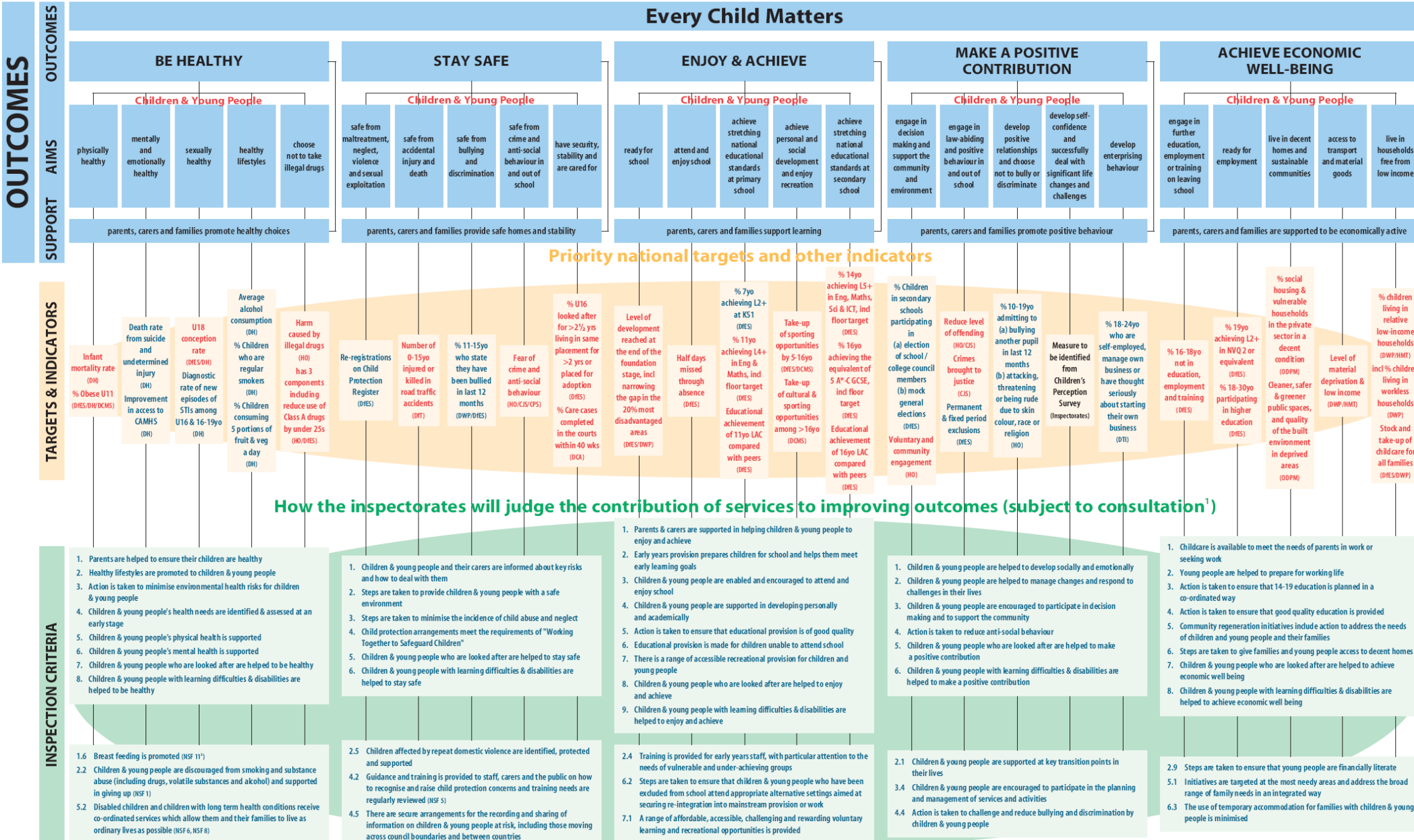
### **PCTS**

East Cambridgeshire and Fenland – Chief Executive  
Huntingdonshire – Chief executive  
Cambridge City and South Cambridgeshire – Chief Executive

### **Other key organisations**

Connexions – Chief Executive  
Police – Chief Constable  
Local Safeguarding Children Board – Chair  
Probation Service - Head  
Cambridgeshire Fire Service  
Cambridgeshire Council for Voluntary Youth Services – Manager  
Hunts Forum (CVS) – Chief Executive  
Learning and Skills Council – Chief Executive  
Child and Adolescent Mental Health Trust – Chief Executive  
Addenbrooke's National Health Trust – Chief Executive  
Care and Education Partnership - Chair





For queries please contact: everychildmatters@dfes.gsi.gov.uk

NB. All the headline criteria are shown on the top row. Examples of detailed criteria are given for illustrative purposes on the bottom row.

**Footnotes**

- 1 Ofsted will consult from 6 December 2004.
- 2 NSF relates to the National Service Framework, with the number referring to the corresponding standard.





## **CHARTER OF SHARED VALUES**

### **Rights**

Our work helps children and young people to have their views and opinions heard on anything that affects them.

We will work to help children and young people to have their views and opinions heard on anything which affects them.

### **Listening**

Listening to children and young people gives us the ability to improve our service and respond to their needs.

We will listen to children and young people in order to improve our service and respond to their needs.

### **Equal Opportunities**

We believe that children and young people should have equal opportunities. We will support them by actively responding to barriers that cause discrimination.

We will support children and young people's right to equal opportunities by actively responding to barriers that cause discrimination.

### **Resources**

It is important to identify and allocate resources to support the active involvement of children and young people.

We will identify and allocate resources to support the active involvement of children and young people (this could be a full financial budget or even just an hour or two of someone's time, it still needs to be committed!)

### **Privacy**

We respect the privacy of all the people we deal with and will not share information without the permission of the person concerned, unless we have a legal duty to do so.



**CHILDREN AND YOUNG PEOPLE'S STRATEGIC PARTNERSHIP  
DRAFT WORKING STRUCTURE  
January 2005**

**APPENDIX FIVE**

